



Introduction

Technology is infused into our daily lives as well as devices, transforming everything it comes in contact with, bringing new and optimal ways of executing routine tasks. Technological transformation is inevitable and is one of the prime pillars of advancement in many industries.

Robotic Process Automation was born with the vision of empowering business users to create software bots that could interact with enterprise systems just like humans. RPA bots can log into enterprise applications using credentials, just like humans, and automate tasks that involve any enterprise application, including legacy applications without APIs. Claims processing, loan processing, account reconciliation, invoice generation/submission, and report generation are just a few examples of potential automations that span across different business disciplines.

It is easy to see the potential for substantial time and cost savings, improved customer satisfaction, increased workforce morale, and the ability to build a commanding advantage over competitors using RPA. Fully realizing these gains depends, however, on having an enterprise-class solution.

This paper provides an overview of the industry's highest standard for enterprise-grade security.

ARCHITECTURE AND OPERATIONS

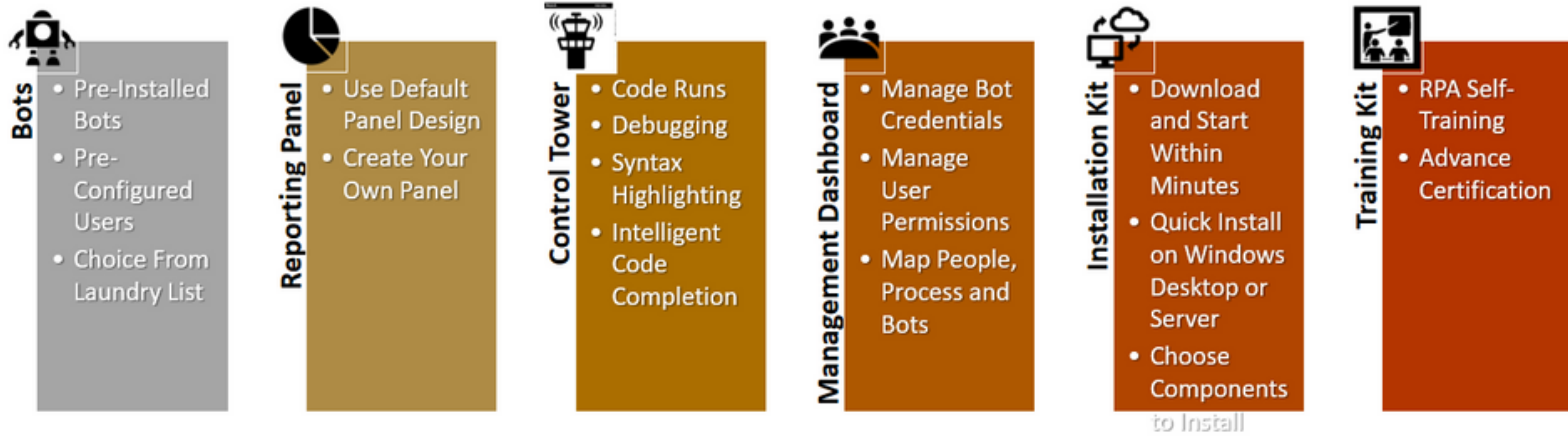
Understanding the security controls needed for an enterprise-class RPA implementation depends on the understanding of the components that comprise the solution and their operations.

Core Components

The core building blocks of Nikky-Enterprise are the Control Tower, Bots, Reporting panel, and Dashboard.



Core Components



END-TO-END DATA PROTECTION

Multi-layer authentication and fine-grained access control are essential for a tightly controlled environment. So is end-to-end data protection, which is also necessary to maintain the confidentiality and integrity of business-critical processes, sensitive data, and related secrets (e.g., credentials).

Nikky Enterprise platform provides an extensive set of safeguards that not only protect data at rest and in transit, but also while it is in use on individual systems

" Robotic Process Automation holds great promise for modern enterprises looking to drive down operational costs, enhance customer satisfaction, and gain an edge on the competition.

Nikky helps ensure maximum achievement of these and other benefits by delivering not only the reliability, scalability, and usability features needed for success, but also the enterprise-grade security required to preserve the confidentiality, integrity, and availability of the entire automation environment. "

Enterprise-Level RPA

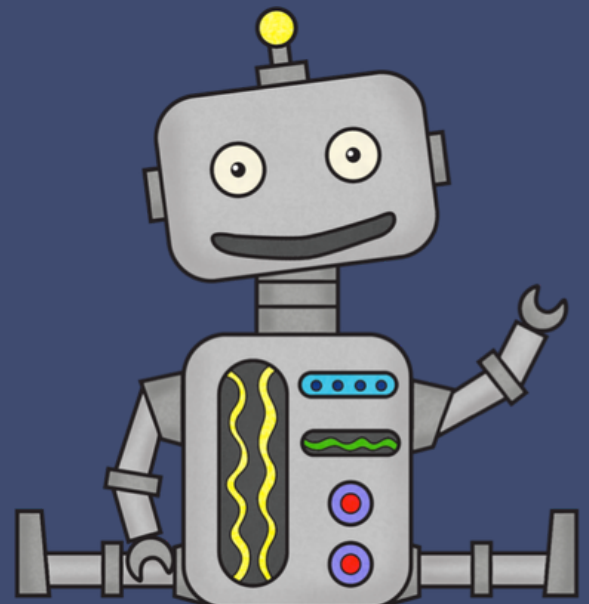
A lot is being said these days about enterprise-level RPA. It's clearly the way to go, but we are in the early days, barely scratching the surface of the potential, and still delivering on promised returns.

Many of the companies adopting RPA are now in the post experimentation phase, preparing to scale or already scaling up as we speak. Others are simply eager to discover how the current projects are performing. And there are plenty of lessons to be learned that should help to inform future automation strategies, especially as we progress towards more AI.

LOGGING AND MONITORING

Comprehensive audit logging, monitoring, and reporting capabilities are essential components of the security architecture for any highprofile IT solution

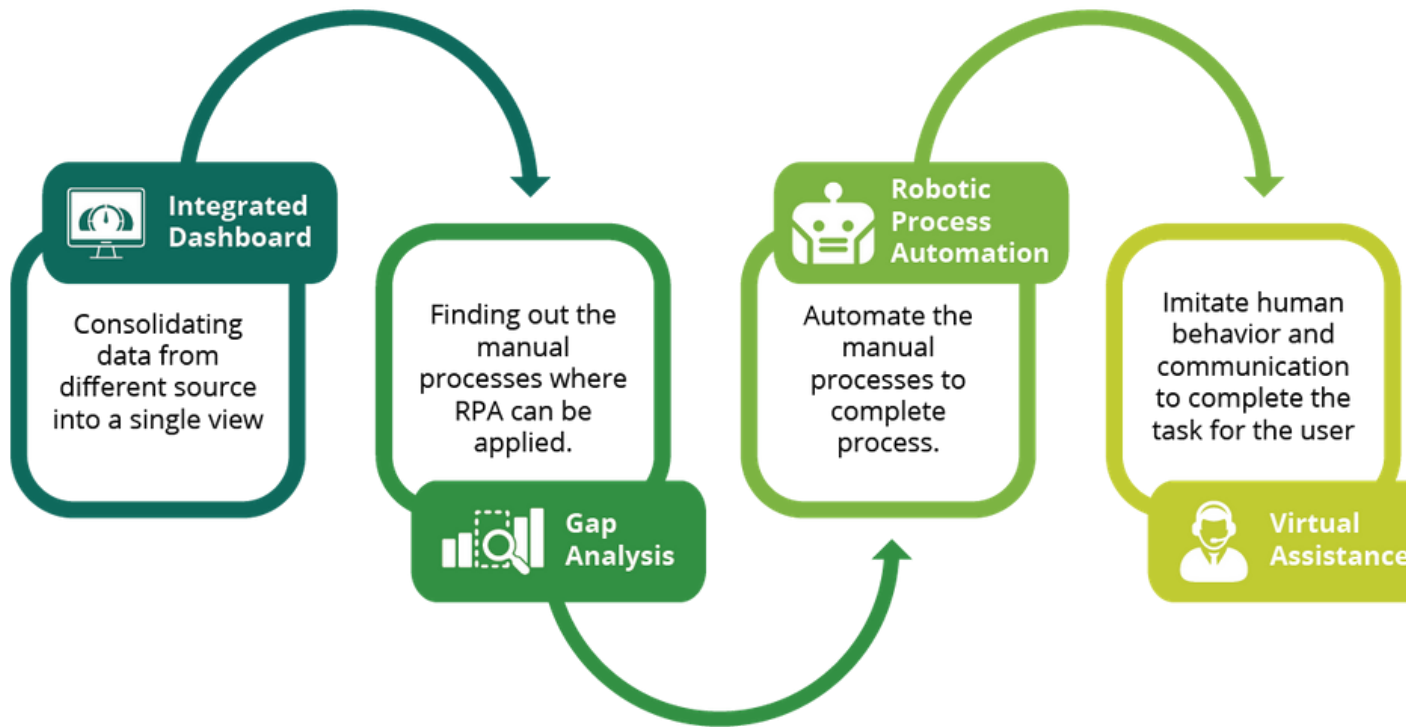
From a monitoring perspective, automated dashboards and bots are accessible within the Control Tower and can be customized according to need.



72 enterprise executives surveyed

This brand-new research looks into how enterprises at different stages of adoption maturity define enterprise RPA and what they specifically consider to be a best-fit RPA solution. 72 enterprise executives contributed to the research, many of whom have invested their RPA efforts in multiple geographies and across varying organizational sizes.

Enterprise-grade RPA can bring real, tangible benefits, ranging from increased regulatory compliance to increased process automation rates and faster ROI. You will find them highlighted in this research paper. But what are the critical enterprise RPA characteristics that ultimately drive these benefits and how do enterprises rank their importance?



Security, scalability, and software richness are indispensable features

For the largest organizations, security and risk mitigation are more important than the other dimensions, and the more mature the organization's RPA program is, the more satisfied they tend to be with their investment.

But there is more to enterprise RPA than technology alone. For winning RPA strategies, good product support, easy access to training and the right partnerships to help move you forward into AI are also critical. We'll let you deep dive into the research here.



Conclusion

The concepts of automation and cognitive computing are not expected to revolutionize the world overnight, but go through steady and seamless growth.

Organizations that have the foresight to anticipate and adapt to change will have the edge. This amplification of business outcomes through technology and automation brings the best to the customers, who are set to gain and enhance their businesses.